

NOTES:

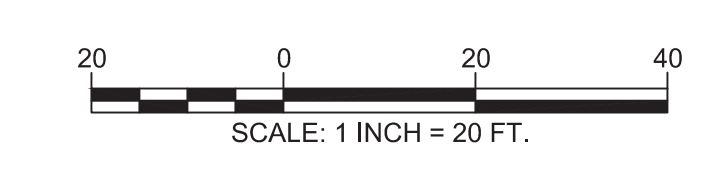
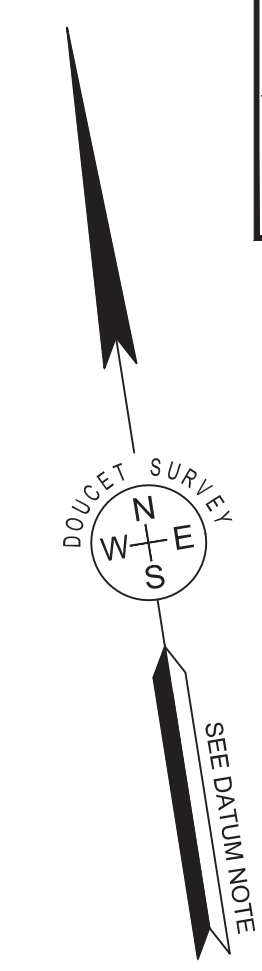
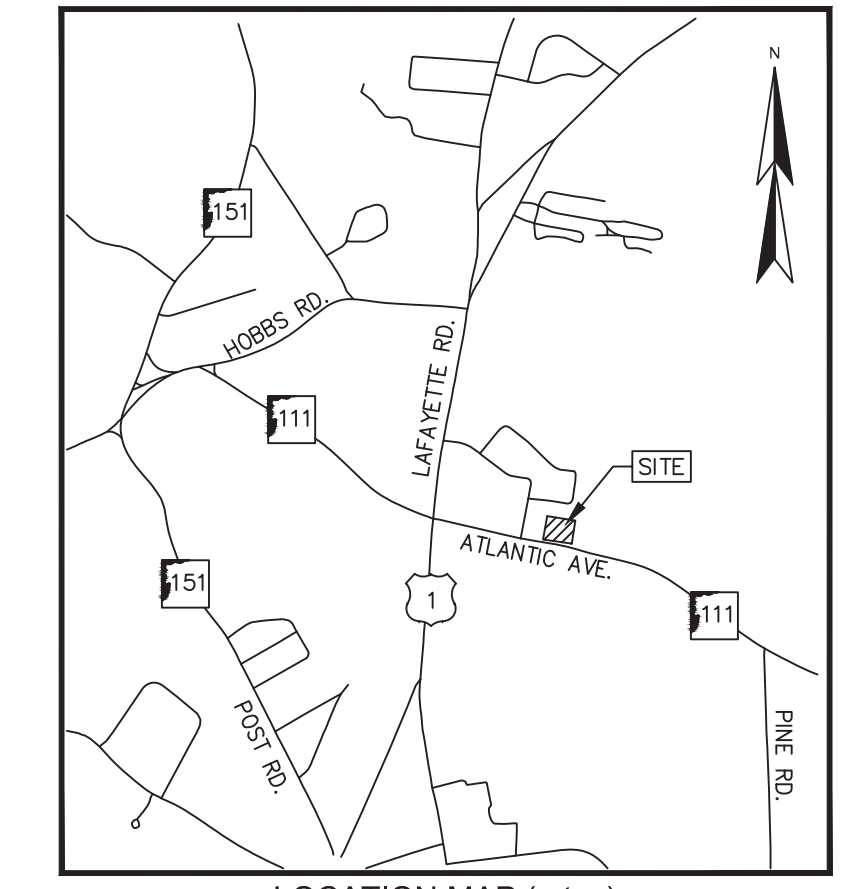
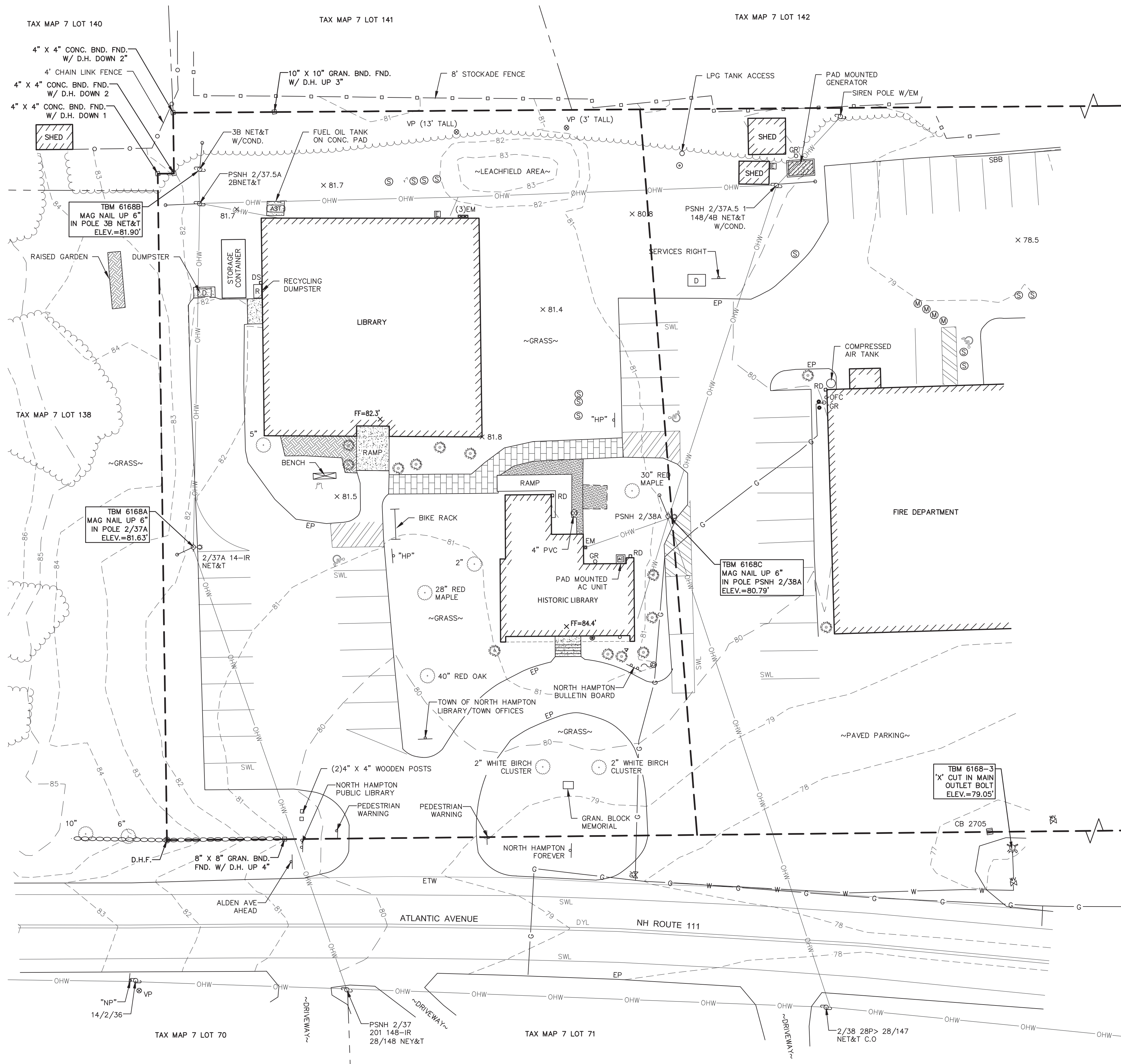
1. REFERENCE: NORTH HAMPTON TOWN LIBRARY ATLANTIC AVENUE (NH ROUTE 111) D.S. PROJECT NO. 6168
2. FIELD SURVEY PERFORMED BY D.C.B. & K.J.L. DURING SEPTEMBER 2019 USING A TRIMBLE S7 TOTAL STATION AND A TRIMBLE R10 SURVEY GRADE GPS WITH A TRIMBLE TSC3 DATA COLLECTOR AND A SOKKIA B21 AUTO LEVEL. TRAVERSE ADJUSTMENT BASED ON LEAST SQUARE ANALYSIS.
3. HORIZONTAL DATUM BASED ON NAD83(2011) NEW HAMPSHIRE STATE PLANE COORDINATE ZONE (2800) DERIVED FROM REDUNDANT GPS OBSERVATIONS UTILIZING THE KEYNET GPS VRS NETWORK.
4. VERTICAL DATUM IS BASED ON APPROXIMATE NAVD88(GEIOD12A) ($\pm 2'$) DERIVED FROM REDUNDANT GPS OBSERVATIONS UTILIZING THE KEYNET GPS VRS NETWORK.
5. THIS MAP IS NOT TO BE CONSTRUED AS A PROPERTY/BOUNDARY SURVEY AND IS SUBJECT TO SUCH FACTS AS SAID SURVEYS MAY DISCLOSE.
6. FLOOD HAZARD ZONE: "X", PER FIRM MAP #33015C0430E, DATED 5/17/05.
7. PROPER FIELD PROCEDURES WERE FOLLOWED IN ORDER TO GENERATE CONTOURS AT 1' INTERVALS. ANY MODIFICATION OF THIS INTERVAL WILL DIMINISH THE INTEGRITY OF THE DATA, AND DOUCET SURVEY WILL NOT BE RESPONSIBLE FOR ANY SUCH ALTERATION PERFORMED BY THE USER.
8. UNDERGROUND UTILITIES SHOWN HEREON ARE BASED ON OBSERVED PHYSICAL EVIDENCE AND PAINT MARKS FOUND ON-SITE.
9. ALL UNDERGROUND UTILITIES (ELECTRIC, GAS, TEL. WATER, SEWER DRAIN SERVICES) ARE SHOWN IN SCHEMATIC FASHION, THEIR LOCATIONS ARE NOT PRECISE OR NECESSARILY ACCURATE. NO WORK WHATSOEVER SHALL BE UNDERTAKEN USING THIS PLAN TO LOCATE THE ABOVE SERVICES. CONSULT WITH THE PROPER AUTHORITIES CONCERNED WITH THE SUBJECT SERVICE LOCATIONS FOR INFORMATION REGARDING SUCH. CALL DIG-SAFE AT 1-888-DIG-SAFE.

REFERENCE PLAN:

"SITE PLAN ATLANTIC AVENUE NORTH HAMPTON, N.H. FOR CORREL ASSOCIATES, ARCH." DATED APRIL 30, 1990 BY DURGIN - SCHOFIELD ASSOCIATES.

LEGEND

- APPROXIMATE LOT LINE (PRE REF. PLAN)
- APPROXIMATE ABUTTERS LOT LINE
- STONE WALL
- STOCKADE FENCE
- CHAIN LINK FENCE
- OHW OVERHEAD WIRE
- G GAS LINE
- W WATER LINE
- 80 MAJOR CONTOUR LINE
- 79 MINOR CONTOUR LINE
- TREE LINE
- SHRUB LINE
- CONCRETE
- LANDSCAPED AREA
- CRUSHED STONE
- BRICK
- UTILITY POLE
- UTILITY POLE & GUY WIRE
- UTILITY POLE W/LIGHT
- SIGN
- SIGN (TWO POSTS)
- BOUND FOUND
- DRILL HOLE FOUND
- POST
- BOLLARD
- FIRE HYDRANT
- WATER GATE VALVE
- GAS GATE VALVE
- GAS REGULATOR
- VENT PIPE
- ELECTRIC BOX
- CATCH BASIN
- MANHOLE
- SEWER MANHOLE
- CLEANOUT
- FLAG POLE
- DECIDUOUS TREE
- CONIFEROUS SHRUB
- TREE STUMP
- ACCESSIBLE PARKING SPACE
- SPOT GRADE
- BND. FND.
- D.H.F.
- CONC.
- GRAN.
- D.H.
- DRILL HOLE
- FF FINISHED FLOOR ELEVATION
- EP EDGE OF PAVEMENT
- SBB SLOPED BITUMINOUS BERM
- SWL SINGLE WHITE LINE
- DYL DOUBLE YELLOW LINE
- ETW EDGE OF TRAVELED WAY
- AST ABOVEGROUND STORAGE TANK
- EM ELECTRIC METER
- RD ROOF DRAIN
- DS DOWN SPOUT
- "HP" HANDICAP PARKING SIGN
- "NP" NO PARKING SIGN



TOPOGRAPHIC PLAN
FOR
WILCOX & BARTON INC.
OF THE
NORTH HAMPTON TOWN LIBRARY
ATLANTIC AVENUE (NH ROUTE 111)
NORTH HAMPTON, NEW HAMPSHIRE

NO.	DATE	DESCRIPTION	BY

DRAWN BY:	M.T.L.	DATE:	OCTOBER 16, 2019
CHECKED BY:	S.V.M.	DRAWING NO.	6168A
JOB NO.	6168	SHEET	1 OF 1

DOUCET SURVEY
 Serving Your Professional Surveying & Mapping Needs
 102 Kent Place, Newmarket, NH 03857 (603) 659-6560
 2 Commerce Drive (Suite 202) Bedford, NH 03110 (603) 614-4060
 10 Storer Street (Riverview Suite) Kennebunk, ME (207) 502-7005
 http://www.doucetsurvey.com

FILE NAME: \\P:\PROJECTS\6168A\6168A.dwg PLOT DATE: 05/22/2019 10:00:00 AM PLOT BY: D.C.B. PLOT SCALE: 1"=20' PLOT SHEET: 1 OF 1